

Serial Number Identification Points

September 4, 2009

Index (1 of 3)

- MerCruiser
 - [Sterndrive Diesel](#)
 - [Sterndrive Gas](#)
 - [Inboard](#)
- Outboard
 - [Four Stroke](#)
 - [2.5/3.5 Current Product - All](#)
 - [4/5/6 Current Product - All](#)
 - [8 – 20 Current Product – All Serial #'s Beginning With 0R](#)
 - [9.9 – 25 Historic Product – All Serial #'s Beginning with 0T or 1B](#)
 - [25/30 EFI Current Product - All](#)
 - [40 – 60 - All](#)
 - [75 – 115 Historic – Serial # 1B366822 and Below](#)
 - [75 – 115 Current – Serial # 1B366822 and Above](#)
 - [225 V6 EFI Historic Product - All](#)
 - [135 – 200 Verado - All](#)
 - [200 – 300 Verado - All](#)

Index (2 of 3)

– Two Stroke

- Optimax
 - Serial #1B417701 and below
 - Serial #1B417702 and above
- 2.2-2.5-3.0-3.3 All
4/5/102cc Sail power - 0A809601 and above
- 6/8/9.9 Sea Pro 15 - 0A197112-0D280999
20Jet 20/25/25 Sea Pro/ Marathon - 0G44037 and above
30/40 (2 cylinder) - 0G053314
- 30 Jet/40/40 Mag - 0C159200 and above
- 35/150/XR6/EFI 2000 and up - 0G960500 and above
150/175/200 EFI 2002 and up - 0T40900
- 225/225EFI/250 EFI 1994-2002 - 0D280813-0T408999
- 225/225EFI/250 EFI 2002 and up - 0T409000 and above

– Sport Jet

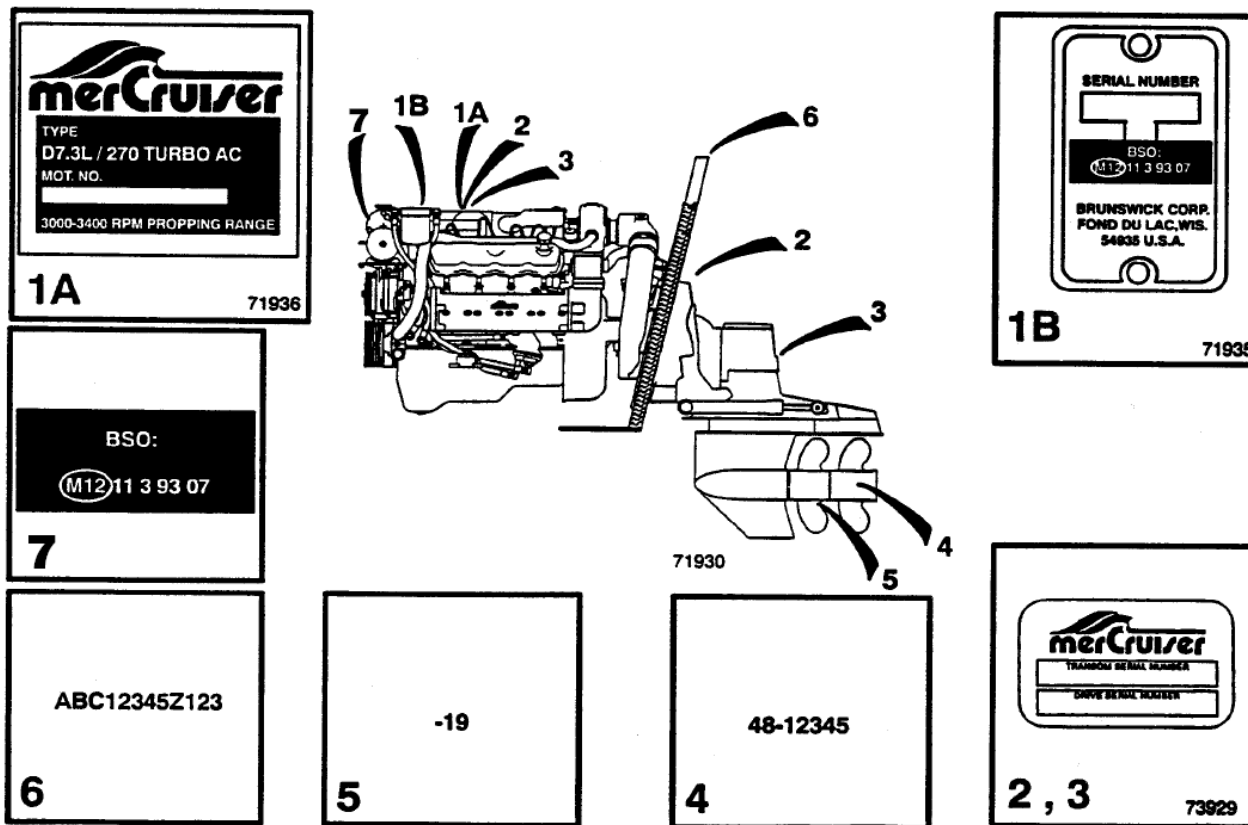
- Sport jet 250 2002 and newer - 0E407100 and Above
- Sport Jet 240 EFI 2002 and newer - 0E406400 and above
- Sport Jet 200 Opti 2001 and newer - 0E384500 and above
- Sport Jet 210/240M2 2000 and newer - 0E373939
- Sport Jet 175 xr2 All

Index (3 of 3)

- Hi-Performance Outboards
 - All

MerCruiser Sterndrive - Diesel Typical Serial Number Locations

The serial numbers are the manufacturer's keys to numerous engineering details which apply to your MerCruiser® power package. When contacting your Authorized MerCruiser Dealer about service, always specify model and serial numbers.



1A- Model & Serial Number Plate

1B- Serial Number Plate

2 - Transom Serial Number

3 - Drive Serial Number

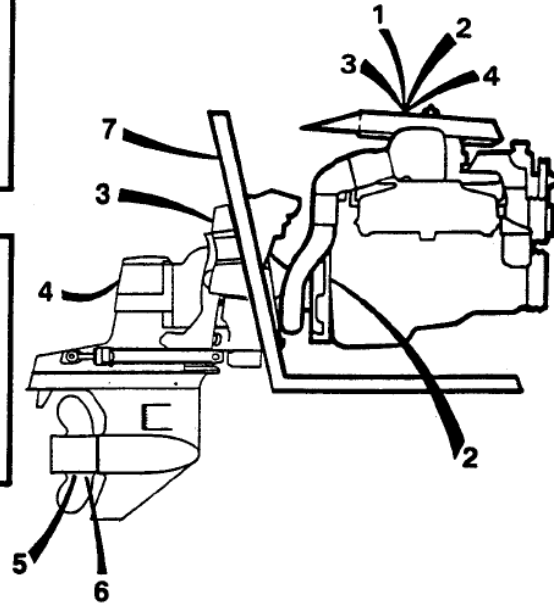
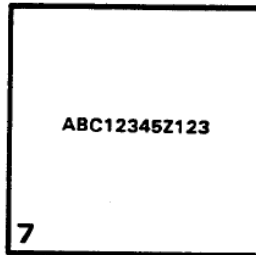
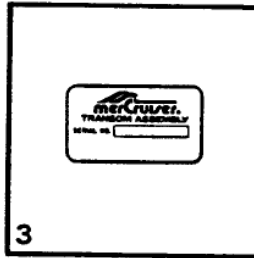
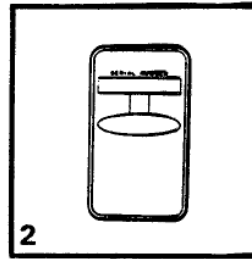
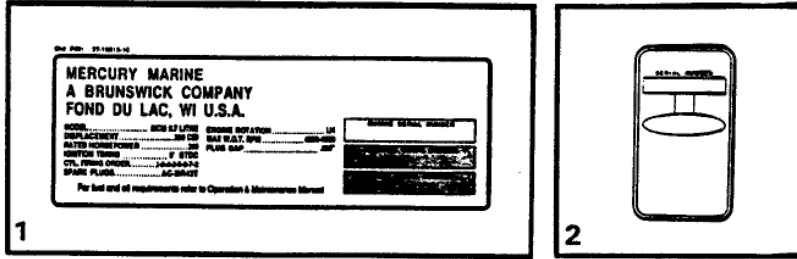
4 - Propeller Part Number

5 - Propeller Pitch

6 - Vessel Serial Number

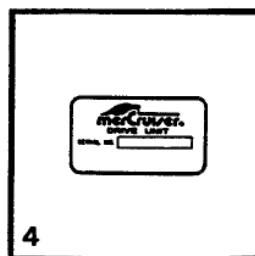
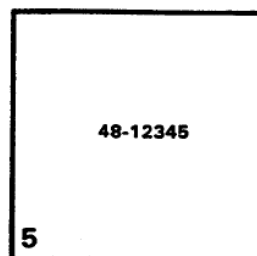
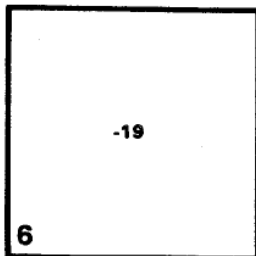
7 - Exhaust Gas Emissions Certificate Number

MerCruiser Sterndrive - Gas Typical Serial Number Locations



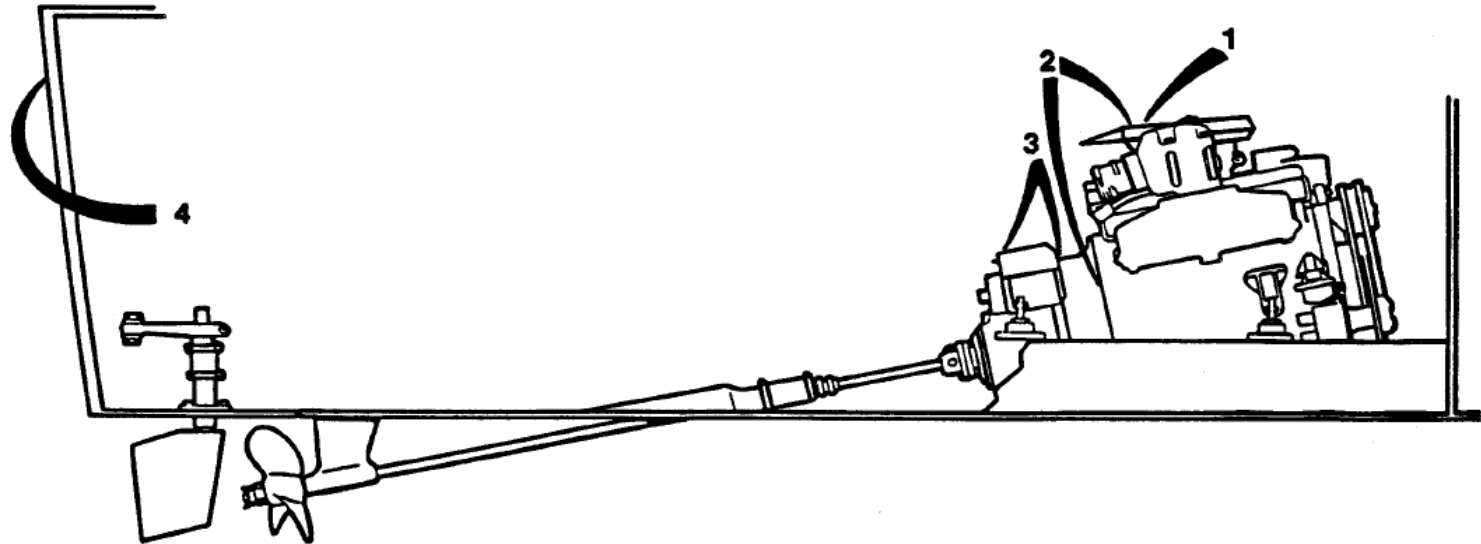
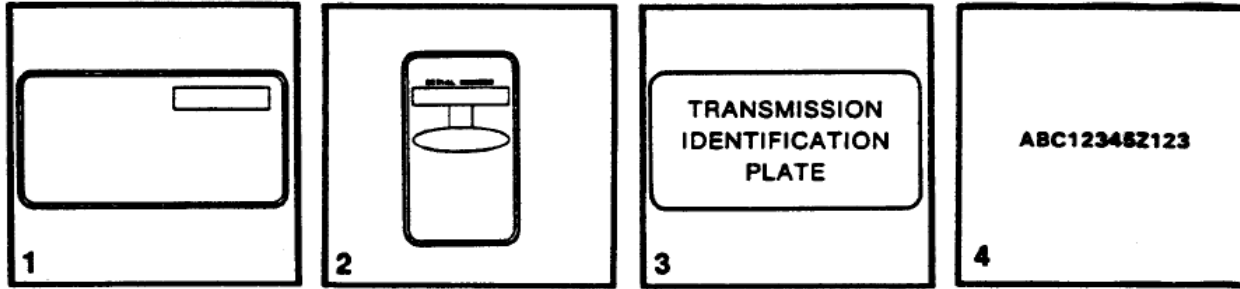
MerCruiser V6

- 1-Engine Serial Number & Specifications
- 2-Engine Serial Number
- 3-Transom Serial Number
- 4-Drive Serial Number
- 5-Propeller Part Number
- 6-Propeller Pitch
- 7-Vessel Serial Number



MerCruiser Inboard Typical Serial Number Locations

The serial numbers are the manufacturer's keys to numerous engineering details which apply to your MerCruiser® power package. When contacting your Authorized MerCruiser Dealer about service, always specify model and serial numbers.



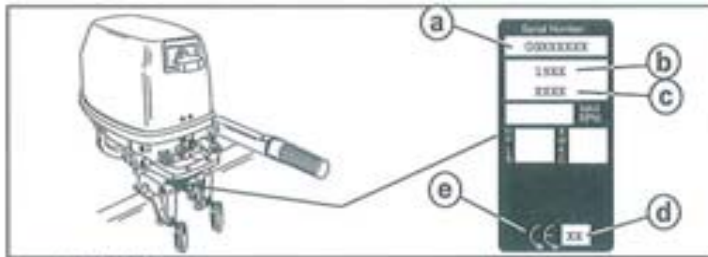
- 1 – Engine Serial Number & Specifications
- 2 – Engine Serial Number
- 3 – Transmission Serial & Model Numbers
- 4 – Vessel Serial Number

Four Stroke

- [2.5/3.5 Current Product - All](#)
- [4/5/6 Current Product - All](#)
- [8 – 20 Current Product – All Serial #'s Beginning With “0R”](#)
- [9.9 – 25 Historic Product – 1B344298 and Below](#)
- [25/30 EFI Current Product - All](#)
- [40 – 60 - All](#)
- [75 – 115 Historic – Serial # 1B366822 and Below](#)
- [75 – 115 Current – Serial # 1B366822 and Above](#)
- [225 V6 EFI Historic Product - All](#)
- [135 – 200 Verado - All](#)
- [200 – 300 Verado - All](#)

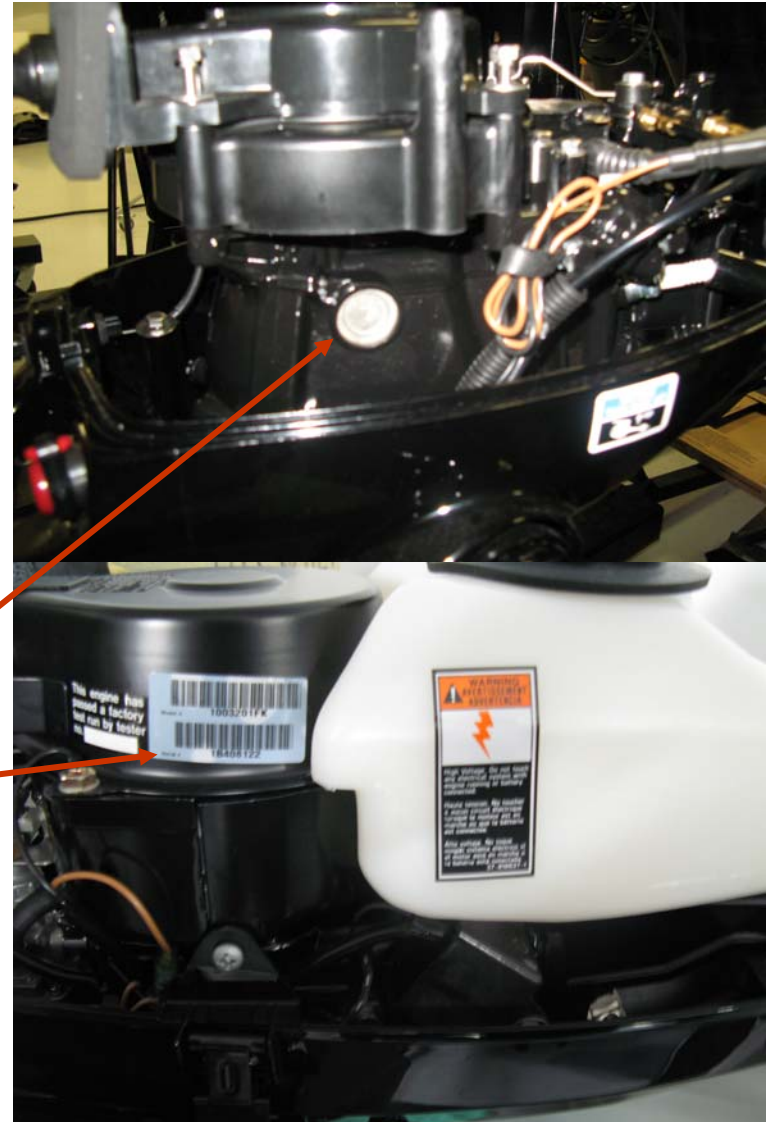
2.5/3.5 HP - All

Serial number decal is located on the top of the transom bracket.



- a - Serial Number
- b - Model Year
- c - Model Description
- d - Year Manufactured
- e - Certified Europe Insignia

Serial number is also stamped to a “freeze” plug on the port side of the crankcase as well as decaled to the flywheel cover.



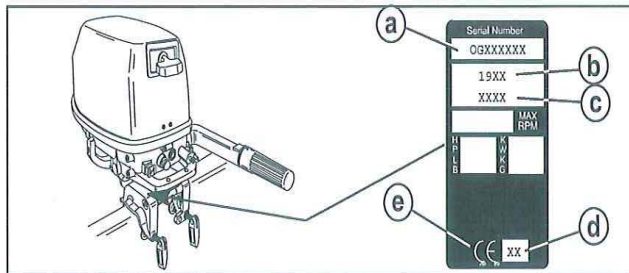
4/5/6 HP - All



GENERAL INFORMATION

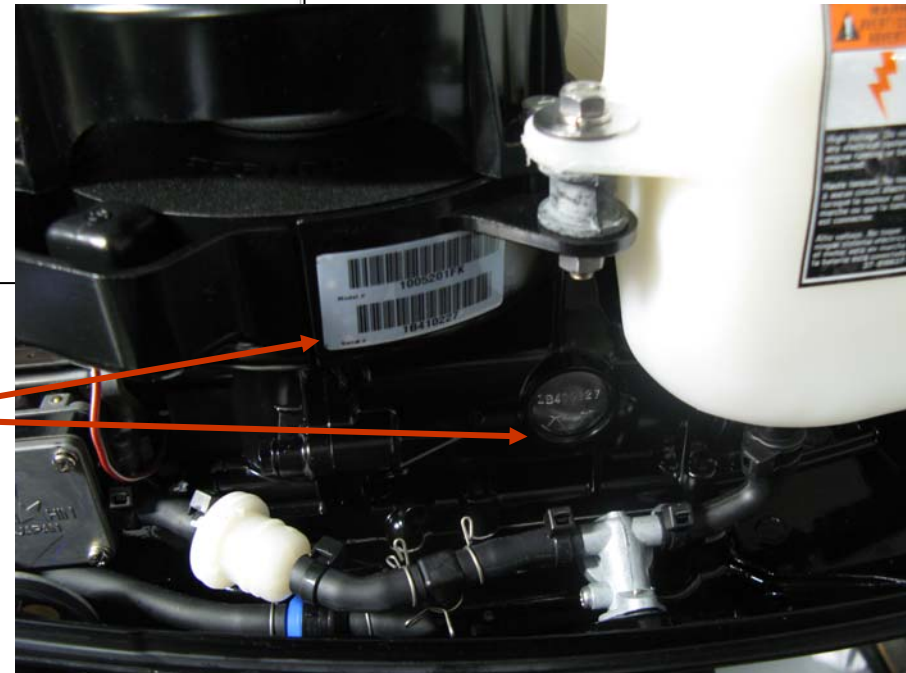
Serial Number Location

The Outboard serial number is located on the lower starboard side of the engine block. A serial number is also located on the top side of the swivel bracket.



- a - Serial Number
- b - Model Year
- c - Model Description
- d - Year Manufactured
- e - Certified Europe Insignia

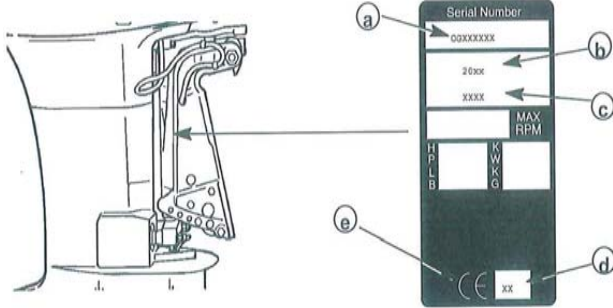
Serial number is also stamped to a “freeze” plug on the starboard side of the crankcase as well as decaled to the flywheel cover.



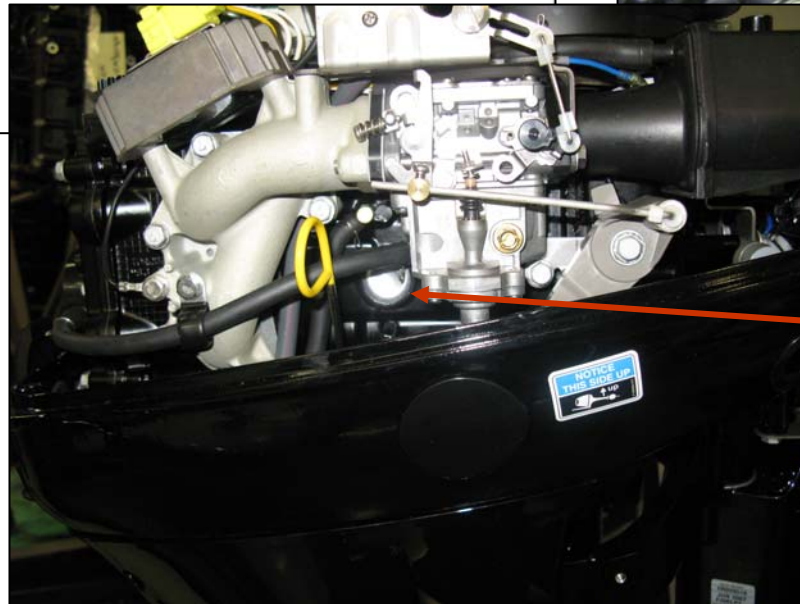
8 – 20 HP - All Serial #'s Beginning With 0R

Serial Number Location

The Outboard serial number is located on the lower starboard side of the engine block. A serial number is also located on the starboard side of the swivel bracket.



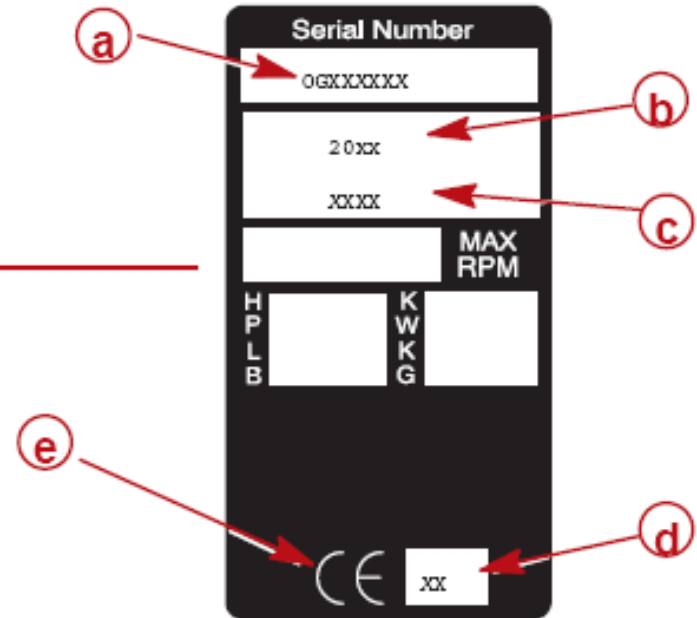
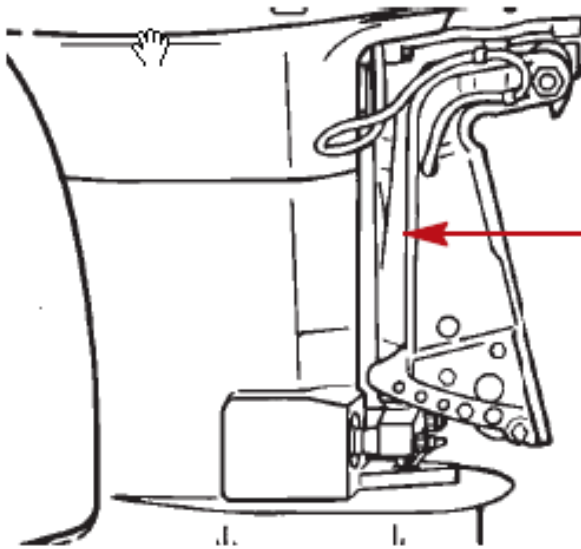
- a - Serial number
- b - Model year
- c - Model description
- d - Year manufactured
- e - Certified Europe insignia



Serial number is also stamped to a “freeze” plug on the starboard side of the crankcase as well as decal'd to the flywheel cover.

9.9 – 25 HP 1B344298 and Below

Serial number is located at the starboard side of the transom bracket



- a** - Serial number
- b** - Model year
- c** - Model description
- d** - Year manufactured
- e** - Certified Europe insignia

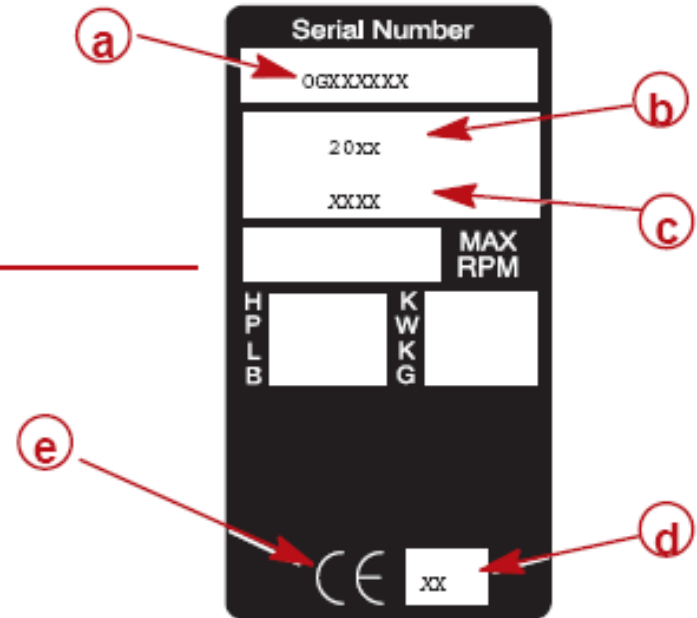
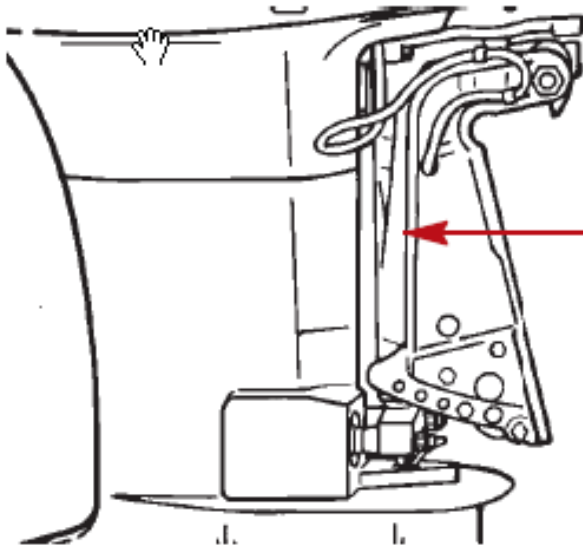
25/30 EFI – All



Serial number is decaled on the flywheel cover, starboard side of swivel bracket and stamped to a top-port mounted “freeze” plug.

40 – 60 HP - AII

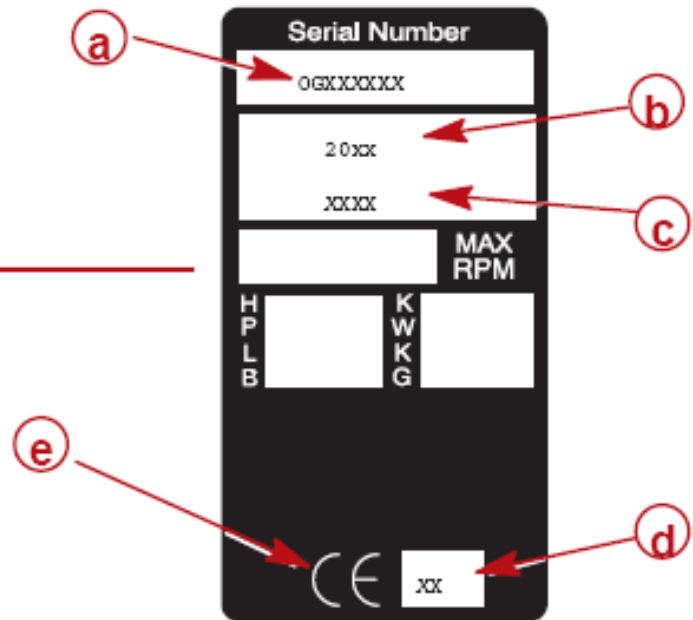
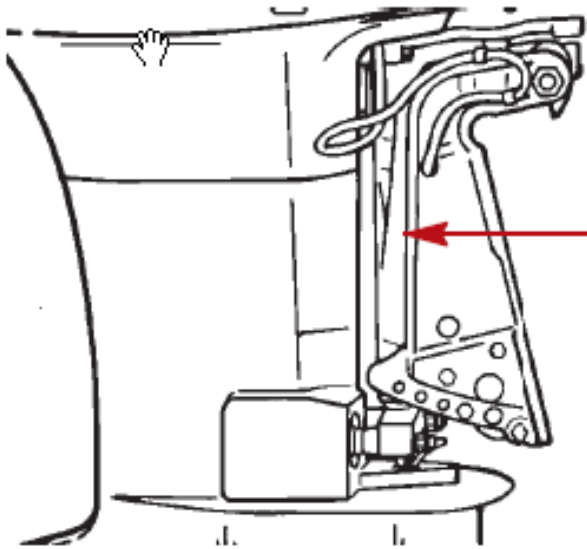
Serial number is located at the starboard side of the transom bracket



- a** - Serial number
- b** - Model year
- c** - Model description
- d** - Year manufactured
- e** - Certified Europe insignia

75 – 115 HP Serial #1B366822 And below

Serial number is located at the starboard side of the transom bracket



- a** - Serial number
- b** - Model year
- c** - Model description
- d** - Year manufactured
- e** - Certified Europe insignia

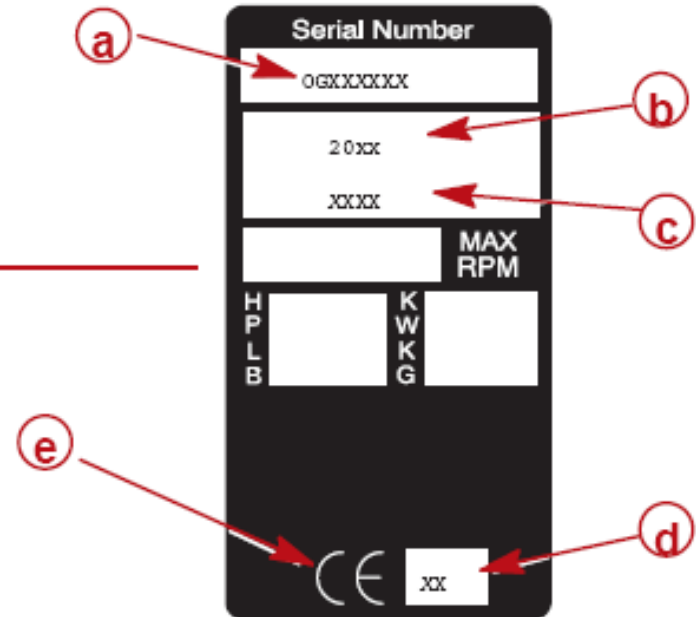
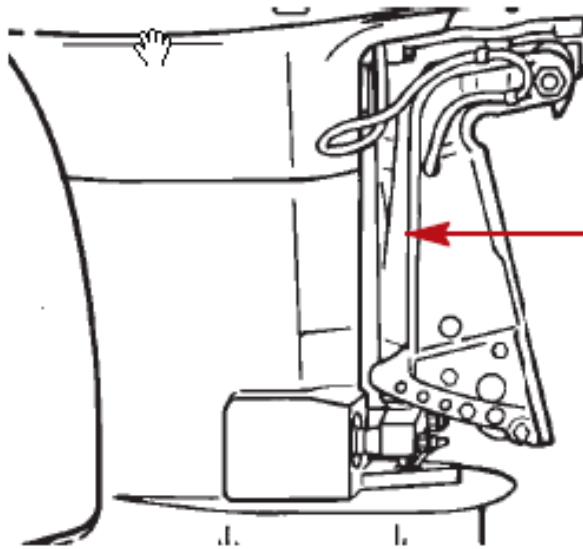
75 – 115 HP Serial #1B366823 And Above

Serial number is located at the starboard side of the transom bracket as well as decaled to the bottom starboard location of the cylinder block.



225 HP Serial #0T979999 And below

Serial number is located at the starboard side of the transom bracket

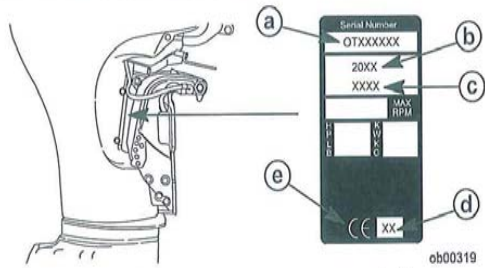


- a** - Serial number
- b** - Model year
- c** - Model description
- d** - Year manufactured
- e** - Certified Europe insignia

Verado L4 – 135 thru 200 HP

Serial Number Location

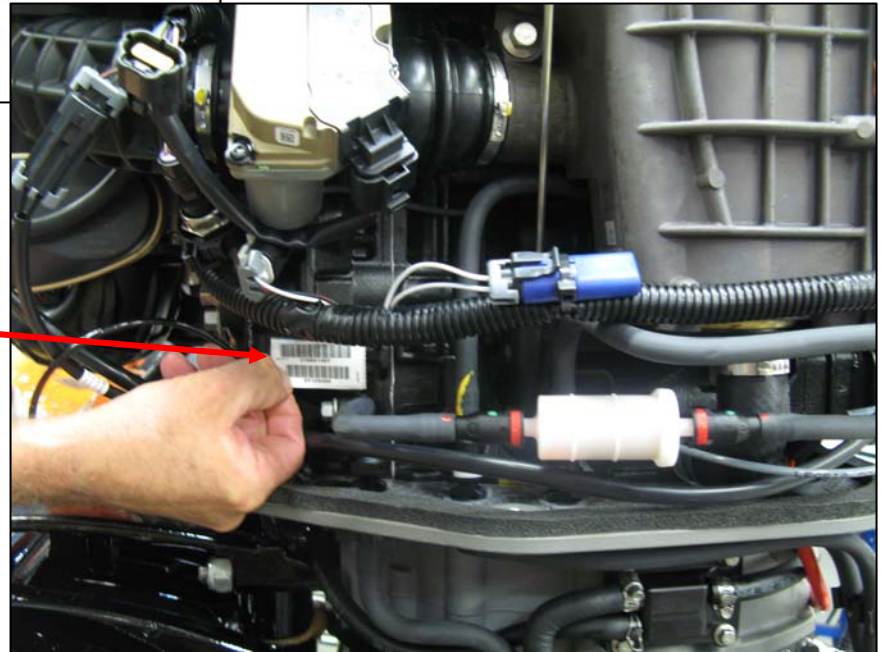
The serial number is located on the starboard side of the swivel bracket.



- a - Serial number
- b - Model year
- c - Model designation

- d - Year manufactured
- e - Certified Europe Insignia (as applicable)

Serial Decal also located at lower port side of block



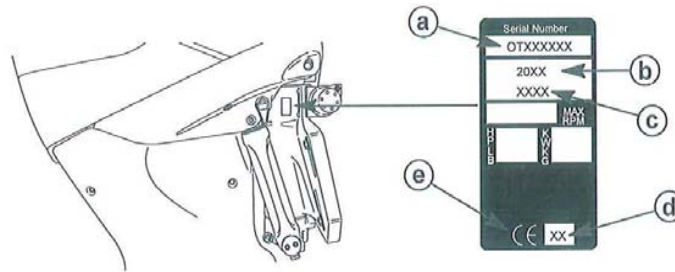
Verado L6 – 200 thru 300 HP



General Information

Serial Number Location

The serial number of the engine is located on the starboard side of the pedestal.



ob01322

- a - Serial number
- b - Model year
- c - Model designation

- d - Year manufactured
- e - Certified Europe Insignia (as applicable)

Serial also located at starboard side of cylinder head



Two Stroke

– Two Stroke

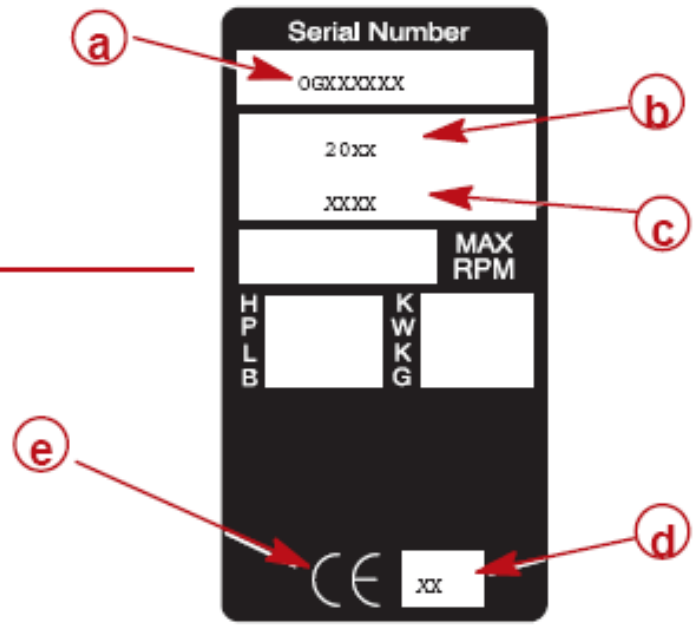
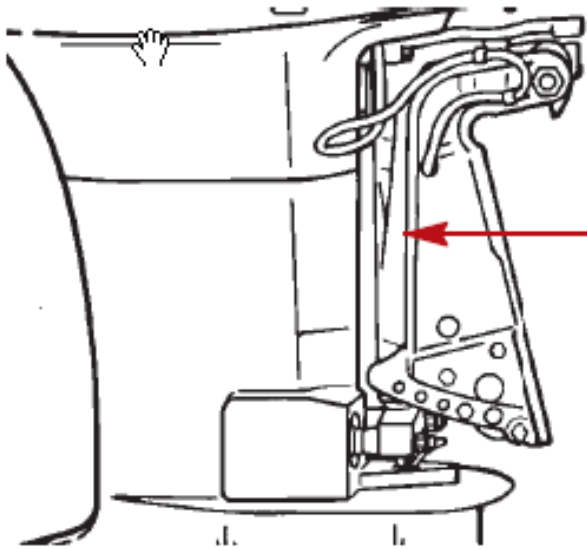
- Optimax
 - [Serial #1B417701 and below](#)
 - [Serial #1B417702 and above](#)
- [2.2-2.5-3.0-3.3 All](#)
[4/5/102cc Sail power - 0A809601 and above](#)
- [6/8/9.9 Sea Pro 15 - 0A197112-0D280999](#)
[20Jet 20/25/25 Sea Pro/ Marathon - 0G44037 and above](#)
[30/40 \(2 cylinder\) - 0G053314](#)
- [30 Jet/40/40 Mag - 0C159200 and above](#)
- [35/150/XR6/EFI 2000 and up - 0G960500 and above](#)
[150/175/200 EFI 2002 and up - 0T40900](#)
- [225/225EFI/250 EFI 1994-2002 - 0D280813-0T408999](#)
- [225/225EFI/250 EFI 2002 and up - 0T409000 and above](#)

– Sport Jet

- [Sport jet 250 2002 and newer - 0E407100 and Above](#)
- [Sport Jet 240 EFI 2002 and newer - 0E406400 and above](#)
- [Sport Jet 200 Opti 2001 and newer - 0E384500 and above](#)
- [Sport Jet 210/240M2 2000 and newer - 0E373939](#)
- [Sport Jet 175 xr2 All](#)

Optimax Serial #1B417701 and Below

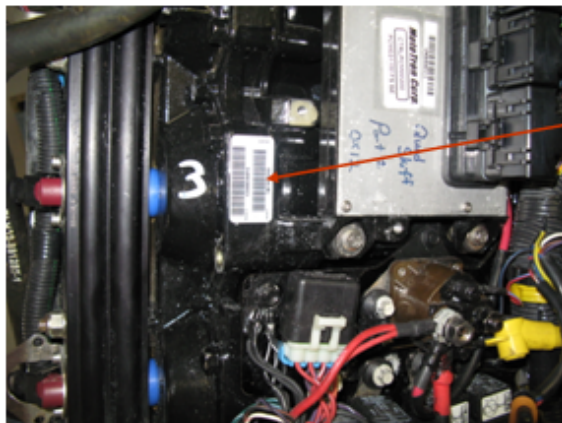
Serial number is located at the starboard side of the transom bracket



- a** - Serial number
- b** - Model year
- c** - Model description
- d** - Year manufactured
- e** - Certified Europe insignia

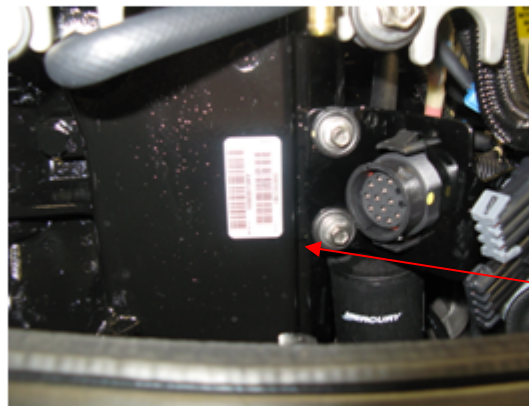
OptiMax Serial Number 1B417702 and Up

Serial Number Decal Location 2.5, 3.0 Liter
Opti/EFI Serial Number 1B417702 and Up



Decal is located on
the cylinder head at
cylinder # 3 level
just behind the PCM

Serial Number Decal Location 1.5 Liter
Opti S/N 1B417702 & Up



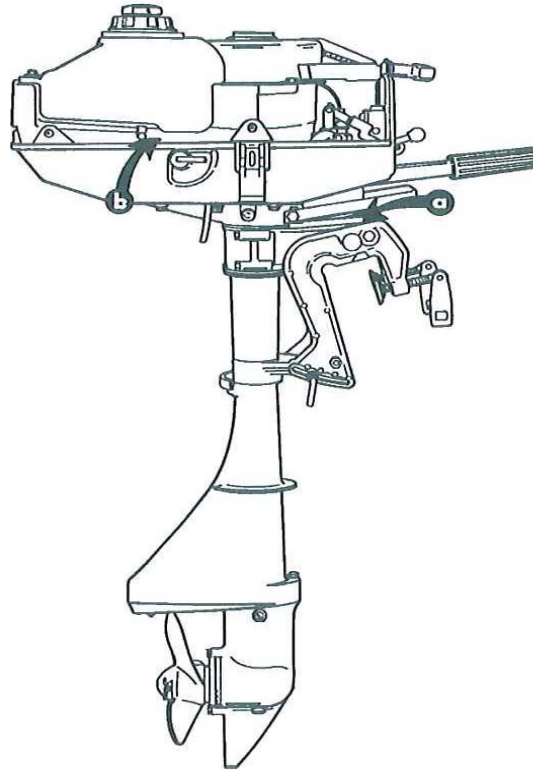
- Decal is located on the
cylinder block exhaust
cover just in front of the
14-pin harness
connector

Serial number is also standard
at the starboard location of the
transom bracket

2.2-2.5-3.0-3.3 All 4/5/102cc Sail power 0A809601 and above

Serial Number Location

1. Serial number is on top of swivel bracket on all models.
2. Serial number is also found on the starboard side of the cylinder block on the 2.5/3.0/3.3.



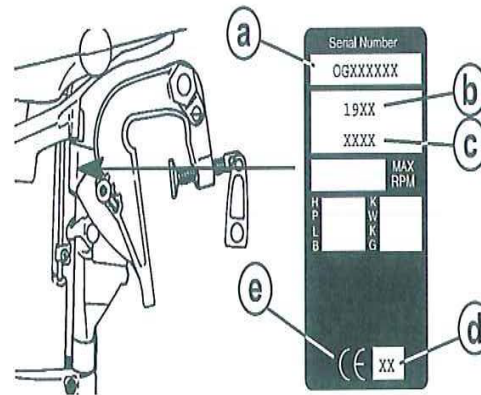
50966

90-44477--1 1192

6/8/9.9 Sea Pro 15 0A197112-0D280999
20Jet 20/25/25 Sea Pro/ Marathon 0G44037 and above
30/40 2 cylinder 0G053314

Serial Number Location

The Outboard serial number is located on the lower starboard side of the engine block. A serial number is also located on the starboard side of the swivel bracket.

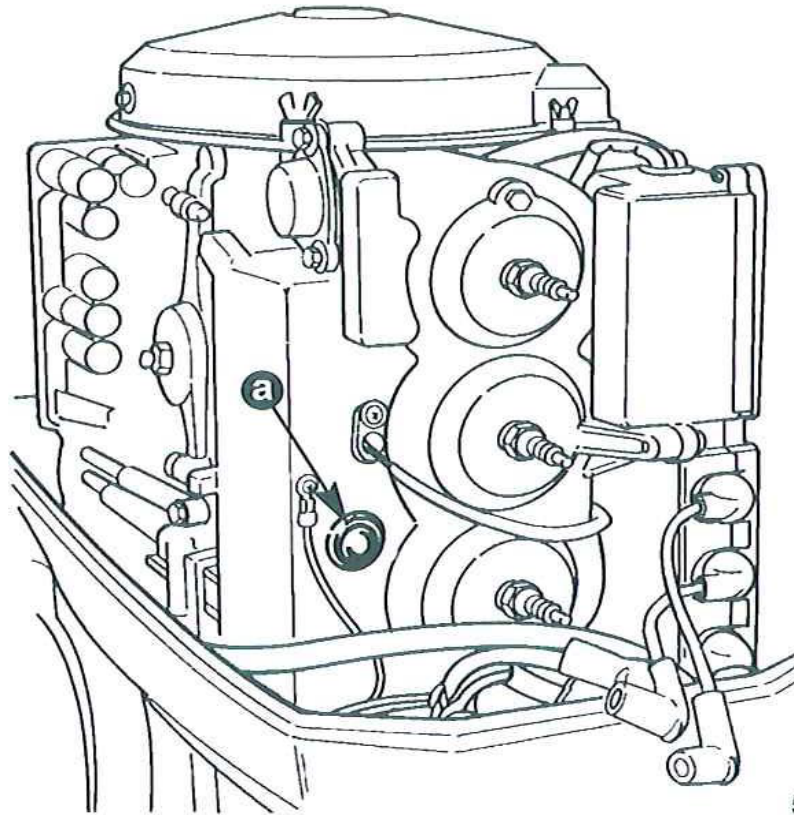


- a - Serial number
- b - Model year
- c - Model description
- d - Year manufactured
- e - Certified Europe insignia

30 Jet/40/40 Mag 4 cylinder 0C159200 and above

Serial Number Location

The engine serial number is located on the starboard side of the swivel bracket (as on all Mariner/Mercury models) and also on the cylinder head (a).

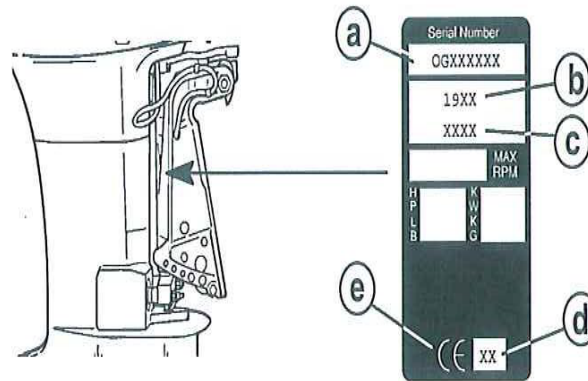


51139

135/150/XR6/EFI 2000 and up 0G960500 and above 150/175/200 EFI 2002 and up 0T40900

Serial Number Location

The engine serial number is located on the top of the engine block. A serial number is also located on the starboard side of the swivel bracket.



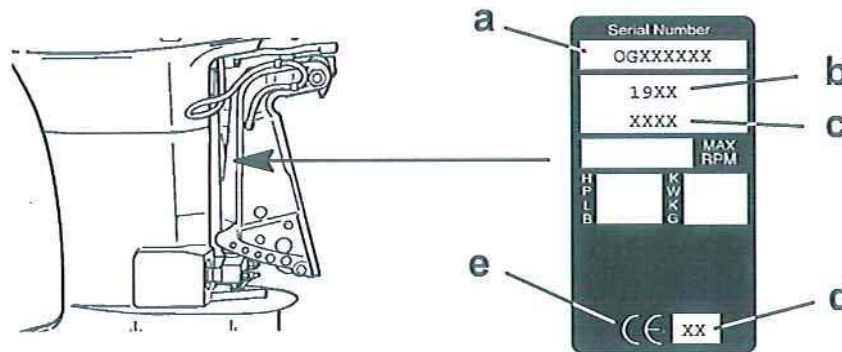
- a - Serial number
- b - Model year
- c - Model description
- d - Year manufactured
- e - Certified Europe insignia

225/225EFI/250 EFI 1994-2002 0D280813-0T408999



Serial Number Location

The engine serial number is located on the lower starboard side of the engine block. A serial number is also located on the starboard side of the swivel bracket.



a - Serial Number

b - Model Year

c - Model Designation

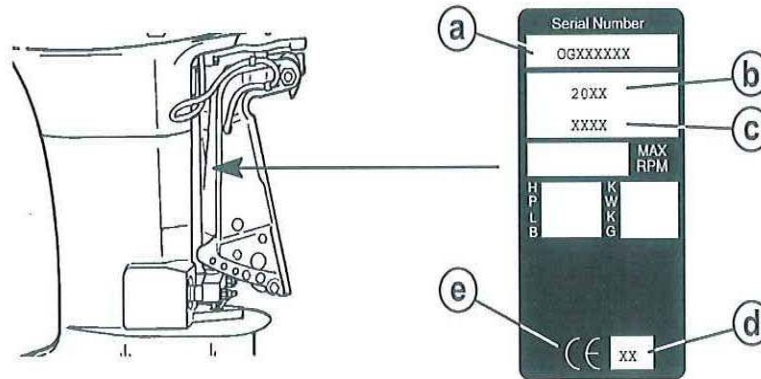
d - Year Manufactured

e - Certified Europe Insignia

225/225EFI/250 EFI 2002 and up 0T409000 and above

Serial Number Location

The engine serial number is located on the top of the engine block. A serial number is also located on the starboard side of the swivel bracket.



- a - Serial Number
- b - Model Year
- c - Model Description
- d - Year Manufactured
- e - Certified Europe Insignia

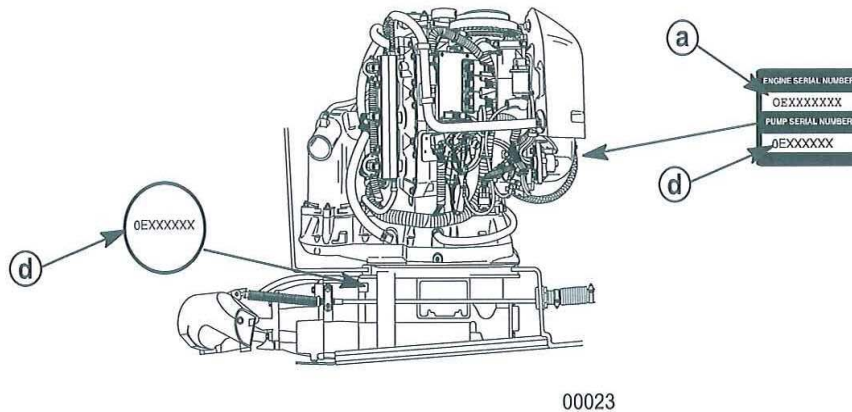
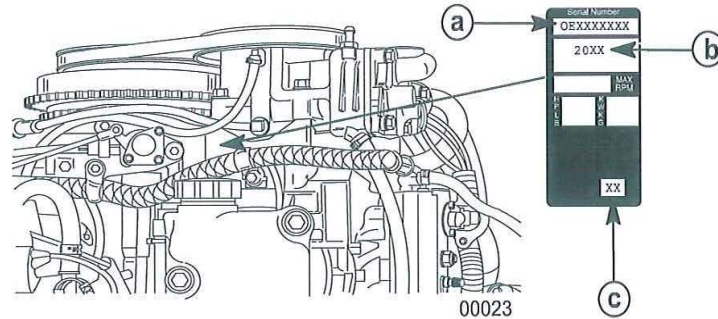
Sport Jet

- [Sport jet 250 2002 and newer - 0E407100 and Above](#)
- [Sport Jet 240 EFI 2002 and newer - 0E406400 and above](#)
- [Sport Jet 200 Opti 2001 and newer - 0E384500 and above](#)
- [Sport Jet 210/240M2 2000 and newer - 0E373939](#)
- [Sport Jet 175 xr2 All](#)

Sport jet 250 2002 and newer. 0E407100 and Above

Serial Number Location

A serial number decal is located on the side of the flywheel cover and on top of the cylinder block.



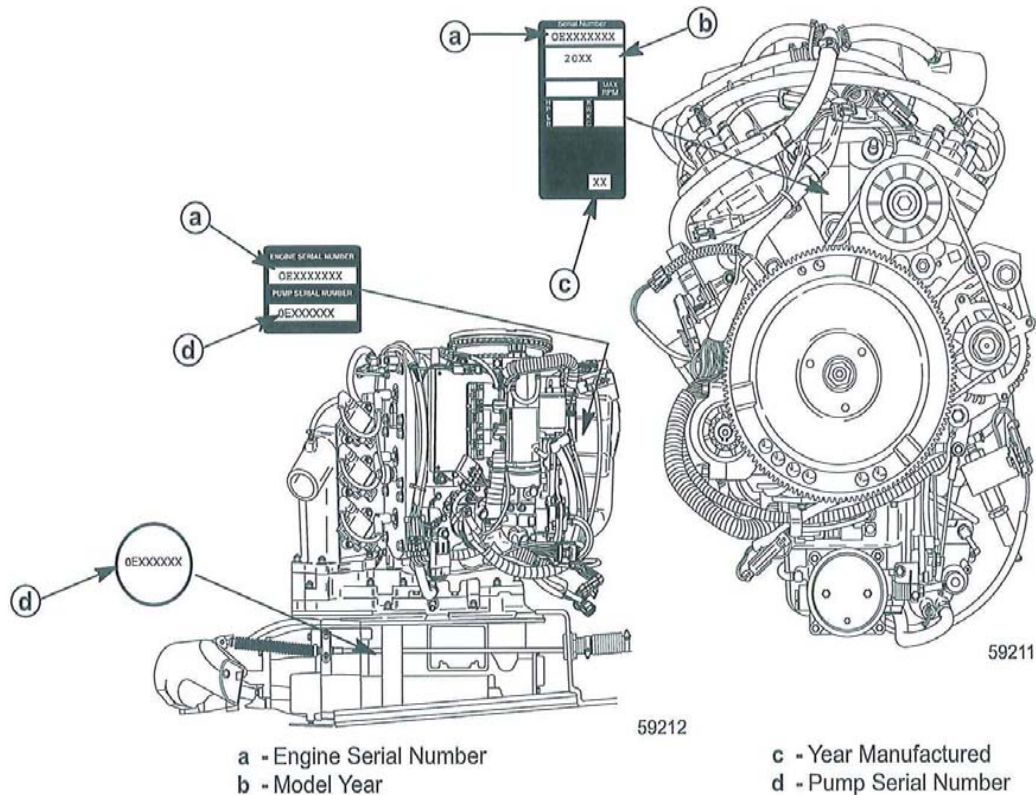
- a - Engine Serial Number
- b - Model Year
- c - Year Manufactured
- d - Pump Serial Number

IMPORTANT: The Pump Unit Serial Number sticker must be taken out of the envelope affixed to the pump unit and applied to decal on electrical plate.

Sport Jet 240 EFI 2002 and newer 0E406400 and above

Serial Number Location

A serial number decal is located on the side of the flywheel cover and on top of the cylinder block.

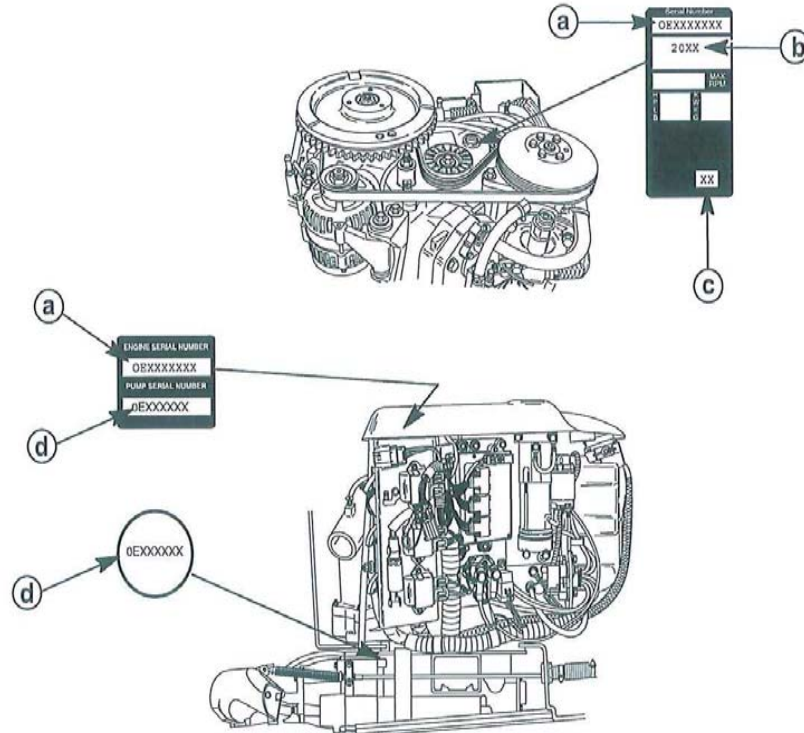


IMPORTANT: The Pump Unit Serial Number sticker must be taken out of the envelope affixed to the pump unit and applied to decal on air intake.

Sport Jet 200 Opti 2001 and newer 0E384500 and above

Serial Number Location

A serial number decal is located on the side of the flywheel cover and on top of the cylinder block.



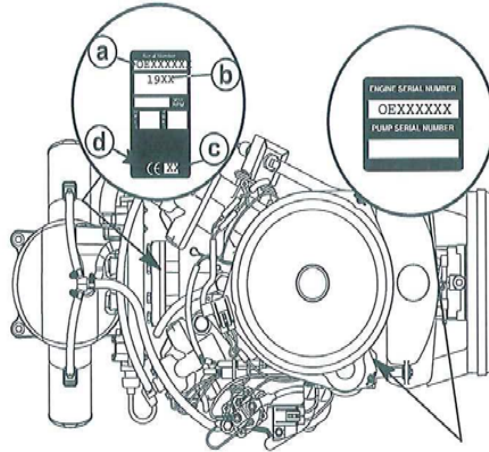
- a - Engine Serial Number
- b - Model Year
- c - Year Manufactured
- d - Pump Serial Number

IMPORTANT: The Pump Unit Serial Number sticker must be taken out of the envelope affixed to the pump unit and applied to decal on electrical plate.

Sport Jet 210/240M2 2000 and newer 0E373939

Serial Number Location

A serial number decal is located on the side of the flywheel cover and on top of the cylinder block.



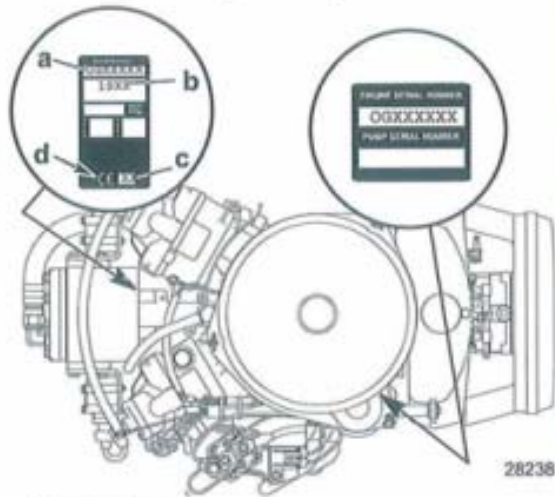
- a - Engine serial number
- b - Model year
- c - Year manufactured
- d - Certified Europe

IMPORTANT: The Pump Unit Serial Number sticker must be taken out of the envelope affixed to the pump unit and applied to the flywheel cover decal.

Sport Jet 175 xr2 All

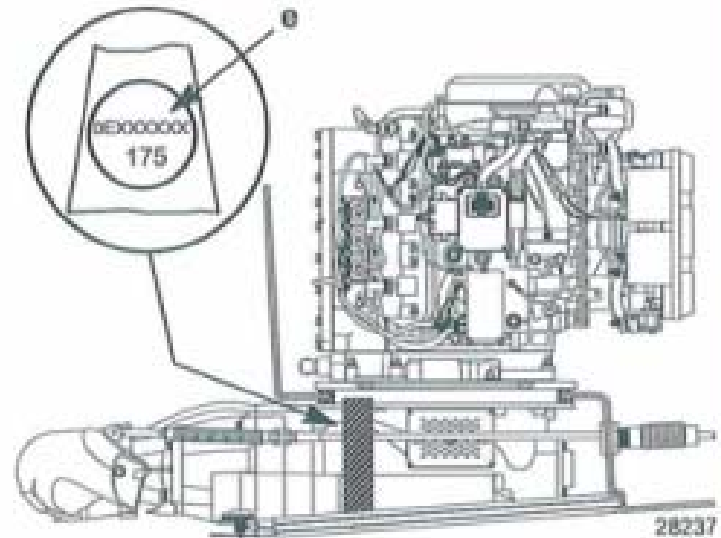
Serial Number Decal Location

A serial number decal is located on the side of the flywheel cover and on top of the cylinder block.



- a - Engine Serial Number
- b - Model Year
- c - Year Manufactured
- d - Certified Europe

The engine serial number and pump serial number are different and unique. The engine serial number is located aft of the flywheel cover. The pump unit serial number is stamped in a plug located above the shift cable hole on the starboard side of the pump housing.



- e - Pump Unit Serial Number

Hi-Performance Outboards - All

- [Transom Bracket ID](#)
- [Cylinder Block Stamped ID](#)

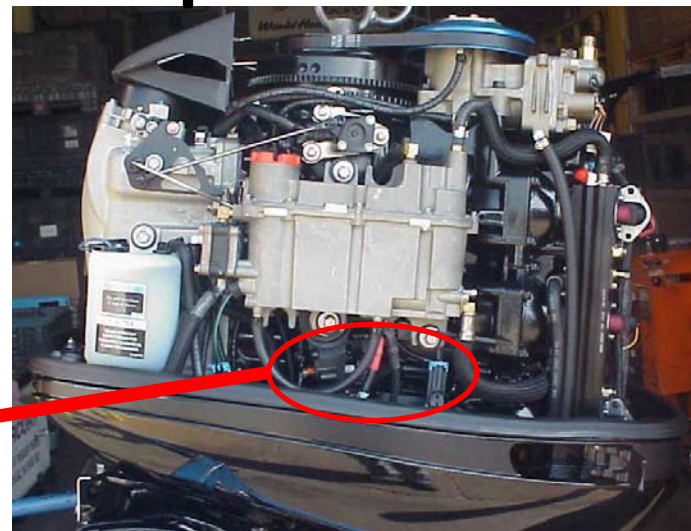
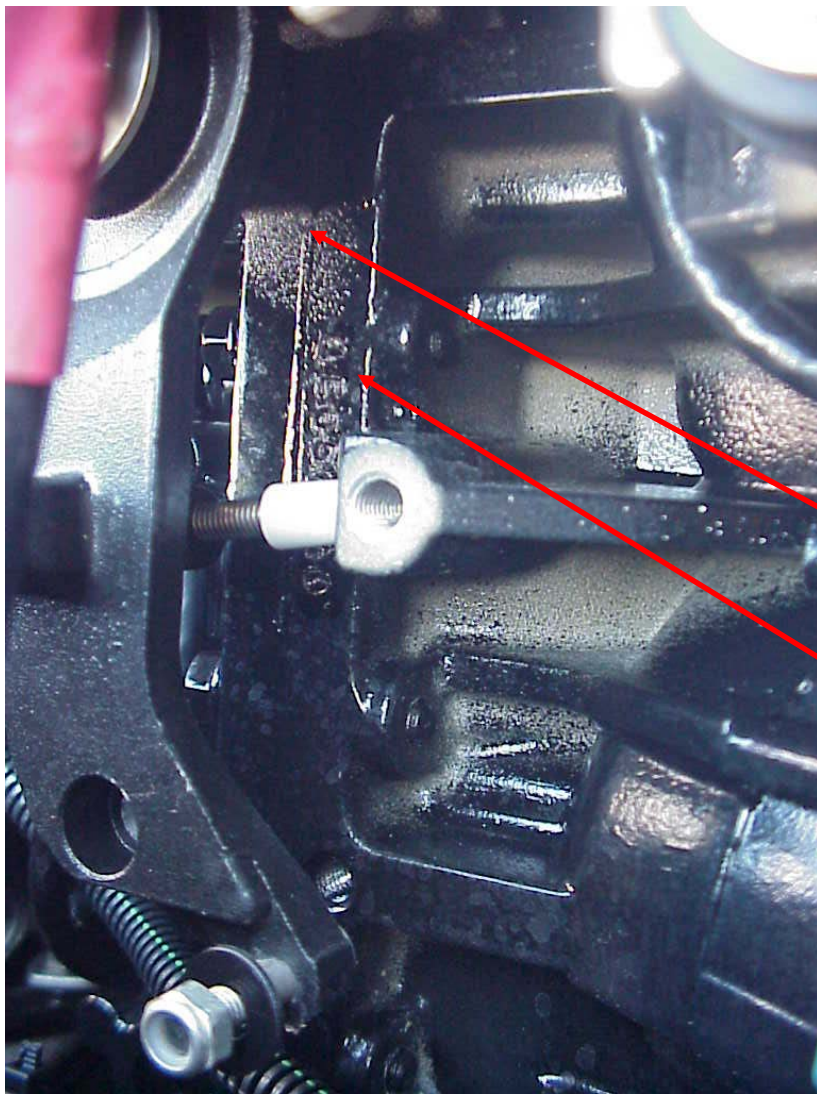
Transom Bracket ID



Serial Number w/Model
Number Tag:

Located on the
swivel/clamp bracket in
approximately one of
these areas

Cylinder Block Stamped ID



Engine crankcase split-line area

Serial number is stamped on the split-line of the powerhead. It is typically on either the upper or lower half of the engine crankcase split-line. It is a hand stamped number so it sometimes may not look uniform and is almost always behind the throttle/shift control lever.